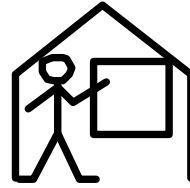


September 30th 2011



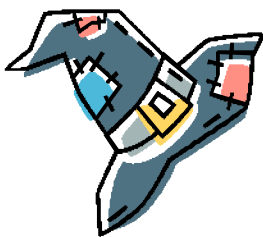
Dear parents and carers,

This has been a lovely week in school; we have all been making the most of the delightful sunshine and going out and about, learning outside as well as going onto the field at lunchtimes.



Harvest Festival

Just a reminder that our Harvest festival takes place on Wednesday at 10:30am at St Mary's Church, Woughton on the Green. We will be leaving school from 9:30am onwards to walk to the church if you would like to come along and join us. We welcome any contributions of food for our harvest celebrations which will be taken to The Salvation Army afterwards for dispersal.



Halloween Party

Our Halloween party for families takes place on Monday October 31st between 5:30pm and 7:30pm costing £1 per person which is payable on the door. Please note that children must be accompanied by adults. I'm sure that it will be a fun packed occasion and look forward to seeing you all there.



Post 16 Café

Do come along to our café which is run by students from Post 16 on a Friday Morning. The opening times are 10am - 11:30am (last orders at 11:15am) and entrance is via the Post 16 Courtyard. The café is open every Friday morning until November 25th. A wide range of cakes, snacks and hot and cold drinks are served and it has become hugely popular with staff, parents and carers as well as visitors to the school.

Rowan are Class of the Week

Rowan have been very busy since the start of term. We have had a visit to Milton Keynes Museum as part of our 'Surprise' topic. The pupils really enjoyed the visit especially the telephone exchange where we could call each other on lots of different styles of phones; some of them were really old. Jaydon and David enjoyed the Victorian Parlour room, there were lots of very old things in the room and they got to play on the piano that you played using the pedals with your feet. Some of us went into the air raid shelter in the war garden it was very dark and scary.



We have also been working with the ipads, which are a favourite, everyone likes working with them. We have two in class and we are using them to help support learning across the curriculum as well as using them during choice time. During choice time the pupils will choose which app they want to use and then have their turn, the other pupils are learning to wait their turn which can sometimes be really hard but they will usually wait for their turn as they really enjoy using them.



IEP Assessment Week

The week beginning October 17th is our IEP Assessment Week. If your son / daughter does not have their Annual Review this term then their class teacher will be getting in contact with you to arrange to meet to discuss, review and set new IEP targets.



School Website

We are currently working on updating the school website. Work has been completed on the new class pages and there is now a section where each class has a photograph uploaded each week.



Have a relaxing, warm and sunny Autumn weekend everyone

Ruth

